

MICROPULSE® PF
Low-profile linear position transducer



MICROPULSE®



50
68

M5x25 ISO 4762

PF

MICROPULSE® PF

Low-profile linear position transducer

The Perfect Fit

Linear position sensors play an important role in today's complex and increasingly efficient manufacturing processes. Providing accurate, reliable, continuous position feedback is only the start. Linear position sensors must also deliver value by being easy to install and easy to use, without taking up valuable space.

The Micropulse® PF-series linear transducer is the *Perfect Fit*. The Micropulse PF provides accurate, reliable linear position feedback in a sleek, low-profile anodized aluminum housing. Incorporating time-tested, field-proven non-contact magnetostrictive sensing technology, the Micropulse PF represents an unmatched combination of performance, usability, and value.

- Low-profile, space-saving housing
- Non-contact magnetostrictive technology
- Absolute analog output
- Stroke lengths up to 180"
- Accurate, rugged, and reliable
- 5-day standard delivery



Assembled
in the USA



Perfect Fit



Micropulse PF Applications:

- Plastic injection and blow molding
- Woodworking and metalforming
- Material handling and packaging machinery
- General factory automation



Sliding captive or free-floating position magnets

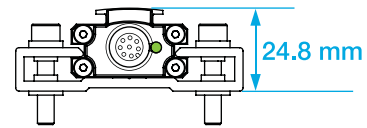


Freely-positionable mounting clamps included



Integrated status LED
Industry-standard M12 connector

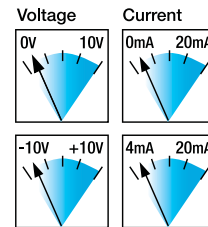
Low-Profile Housing



Less than 1" high, the Micropulse PF is ideal for space-critical applications.

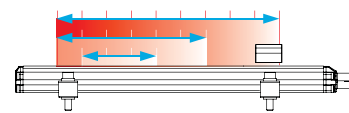
The rugged, compact, extruded-aluminum housing fits into even the tightest space.

Analog Outputs



The Micropulse PF is available with voltage (0...10V, -10...+10V) or current (0.1...20 mA or 4...20 mA) outputs. The sensing element and processing electronics are contained within the Micropulse PF's low-profile housing. No additional processing electronics are required.

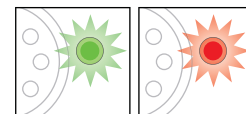
Scalable Stroke



ZERO and SPAN can be easily and quickly programmed anywhere within

the active stroke. Programming can be done through the connector, either manually or by using the optional in-line programming box.

Bi-color Status LED



The integrated bi-color status LED provides at-a-glance confirmation of operational status, and also provides visual feedback during stroke scaling.

LED	Operating state
Green	Normal function Magnet is within the measuring range
Flashing red	Out of range Magnet is outside the measuring range
Red	Error No magnet or magnet outside the limits

MICROPULSE® PF Accessories



Teach Box

Description	Programming box
for series	BTL6 profile PF
Part number	BTL7-A-CB02-S115
Degree of protection	IP40
Current draw	max. 50 mA (not including transducer)

Note: The programming box is an optional accessory that can be used to simplify stroke scaling. Stroke scaling can also be done manually through the connector.

Position Magnets

Description	Magnet – sliding captive	Magnet – floating
for series	BTL6 profile PF	BTL6 profile PF
Ordering code	BAM01FC	BAM014M
Part number	BTL5-T-2814-1S	BTL5-P-3800-2
Material	Housing Sliding surface	Plastic
Weight	approx. 28 g	approx. 12 g
Magnet traverse velocity	any	any
Operating/storage temperature range	-40...+85 °C	-40...+85 °C
Included		Magnet 2 fastening screws DIN 84 M4x35-A2 with washers and nuts



Control Arm

Description	Control arm with swivel eye and M5 male threaded end
for series	BTL6 profile PF
Version	captive
Ordering code	length dependent, order by part number below
Part number	BTL2-GS10-_-_-_-A
Material	Aluminum
Weight	approx. 150 g/m



S115 Connectors and Cables

Description	Connector, female, straight, M12	Molded connector with cable, female, straight, M12	Molded connector with cable, female, right angle, M12
Ordering code	BCC00YA	see table below*	see table below*
Part number	BKS-S115-00	BKS-S115-PU-_-_-	BKS-S116-PU-_-_-
Number of conductors	8	8	8
Conductor cross section	n/a	0.25 mm ²	0.25 mm ²
Contacts	Brass, gold-plated	Brass, gold-plated	Brass, gold-plated
Wire connection	Screw terminals	n/a	n/a
Cable jacket material	n/a	Molded-on PUR	Molded-on PUR
Cable jacket diameter	6...8 mm	6.6 +/-0.2 mm	6.6 +/-0.2 mm
Housing material	Nickel-plated brass	Nickel-plated brass and PUR	Nickel-plated brass and PUR
Min. bend radius	Cable dependent	Dynamic = 5 x Ø, Static = 3 x Ø	Dynamic = 5 x Ø, Static = 3 x Ø
Enclosure rating per IEC 60529	IP 67 (when attached)	IP 67 (when attached)	IP 67 (when attached)



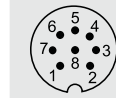
*Cable ordering codes

Length (meters)	Straight	Right angle
02	BCC00YE	BCC00YU
05	BCC00YF	BCC00YW
10	BCC00YH	BCC00YY
15	BCC00YJ	BCC00YZ
20	BCC00YK	BCC00Z0
25	BCC00YL	BCC00Z1

Additional cable lengths available on request.

Wiring Table

Pin	BKS-S115-... BKS-S116-...	-A500	-G500	-C500	-E500
1	Yellow	Not used ¹			
2	Gray	0 V (signal GND)			
3	Pink	Not used ¹			
4	Red	L _a (programming input)			
5	Green	0 to 10 V	-10 to 10 V	0.1 to 20 mA	4 to 20 mA
6	Blue	GND ²			
7	Brown	10 to 30 V (supply)			
8	White	L _b (programming input)			



Pin assignment of S115 connector (view of connector pins of transducer)

For additional accessories, refer to Technical Description/User Guide, available at www.balluff.com/BTL-PF.

¹Unassigned leads can be connected to the GND on the controller side but not to the shield.

²Reference potential for supply voltage and EMC-GND.

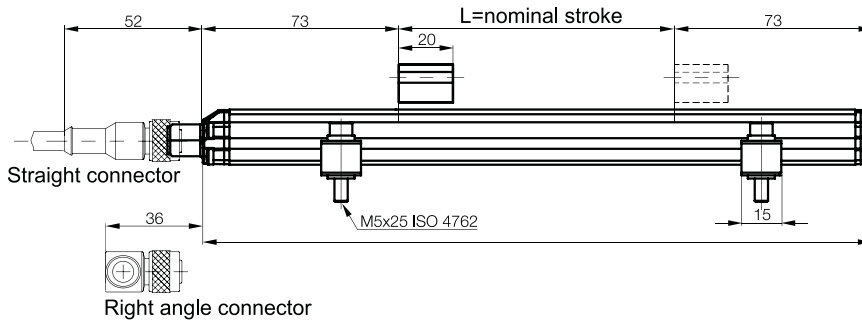
Note: For proper wiring and grounding information, refer to user's guide available at www.balluff.com/BTL-PF

MICROPULSE® PF Specifications

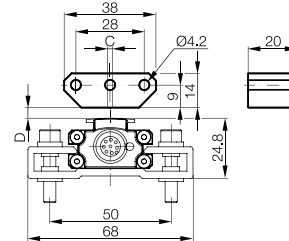


Product Series	Micropulse® PF Profile Style	
Specifications*		
Measurement type	Linear displacement	
Measuring range	51 mm to 4572 mm (2" to 180")	
Electrical outputs	Analog voltage	0...10 Vdc -10...+10 Vdc
	Analog current	0.1...20 mA 4...20 mA
Field-scalable stroke	100% field-scalable using programming inputs or optional programming box	
Position resolution	Voltage output	≤ 0.35 mV
	Current output	≤ 0.7 μA
Non-linearity	Stroke length ≤ 500 mm	± 200 μm
	Stroke length > 500 mm	± 0.04% of full stroke
Connection type	8-pin, M12 connector	
Operating voltage	10...30 Vdc	
Operating current	≤ 150 mA	
Overvoltage and reverse polarity protection	Yes, up to 36 Vdc	
Operating temperature	-25...+70 °C	
Humidity	Anodized aluminum	
Shock rating	50 g/6 ms per IEC 60068-2-27	
Vibration rating	12 g, 10...2000 Hz per IEC 60068-2-6	
Environmental rating	IP67 (with connector attached)	

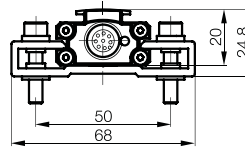
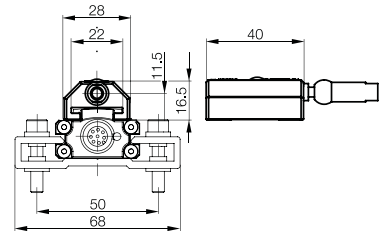
*For complete technical specifications, refer to Technical Description/User Guide, available at www.balluff.com/BTL-PF



Floating magnet



Captive magnet



Mounting clamps

Mounting clamps with isolation washers and screws included with transducer.

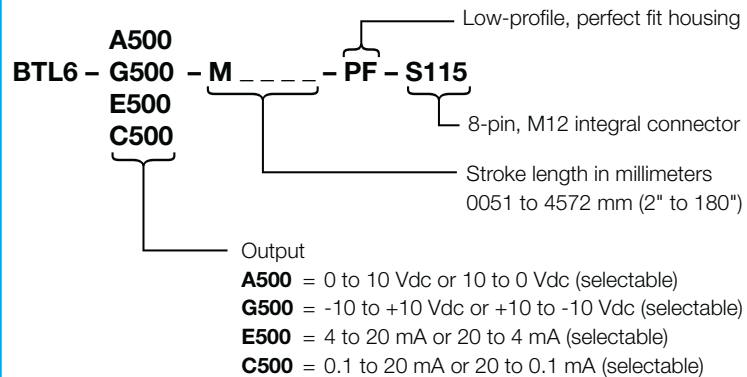
BTL6-A-MF07-A-PF/M5

1 pair of replacement mounting clamps and screws, item no. 180961



Length	Number of mounting clamp pairs
to 250 mm	1
251 to 750 mm	2
751 to 1250 mm	3
1251 to 1750 mm	4
1751 to 2250 mm	5
2251 to 2750 mm	6
2751 to 3250 mm	7
3251 to 3750 mm	8
3751 to 4250 mm	9
more than 4251 mm	10

How to order



Commonly specified stroke lengths:

Inch	mm	Inch	mm	Inch	mm	Inch	mm	Inch	mm
4	0102	6	0152	10	0254	12	0305	18	0457
24	0610	30	0762	36	0914	48	1220	60	1524
72	1829	84	2134	100	2540	120	3048	140	3556

Inch to millimeter conversion: inches x 25.4 = millimeters



Packaging

The economical Micropulse PF's low-profile housing makes it ideal for applications on material handling and packaging machinery, such as automatic size changing.



Plastics and Rubber Manufacturing

The Micropulse PF is the ideal replacement for wear-prone resistive linear potentiometers on plastic injection molding and blow molding machinery. Non-contact magnetostrictive technology assures long life and trouble-free operation.



Tire Manufacturing

The Micropulse PF provides accurate, reliable, continuous position feedback on tire manufacturing machinery, such as curing presses and extruders.

www.balluff.com/BTL-PF

USA

Balluff Inc.
8125 Holton Drive
Florence, KY 41042
Phone: (859) 727-2200
Toll-free: 1-800-543-8390
Fax: (859) 727-4823
E-Mail: balluff@balluff.com

Canada

Balluff Canada, Inc.
2840 Argentia Road, Unit #2
Mississauga, Ontario L5N 8G4
Phone: (905) 816-1494
Toll-free: 1-800-927-9654
Fax: (905) 816-1411
E-Mail: balluff.canada@balluff.ca

Mexico

Balluff de Mexico S.A. de C.V.
Prol. Av. Luis M. Vega #109
Col. Ampliacion Cimataro
Queretaro, QRO 76030
Phone: (+52 442) 212-4882, 224-3583, 224-3171
Fax: (+52 442) 214-0536
E-Mail: balluff.mexico@balluff.com



This brochure was printed on 30% post consumer recycled paper. It represents Balluff's commitment to helping the environment.